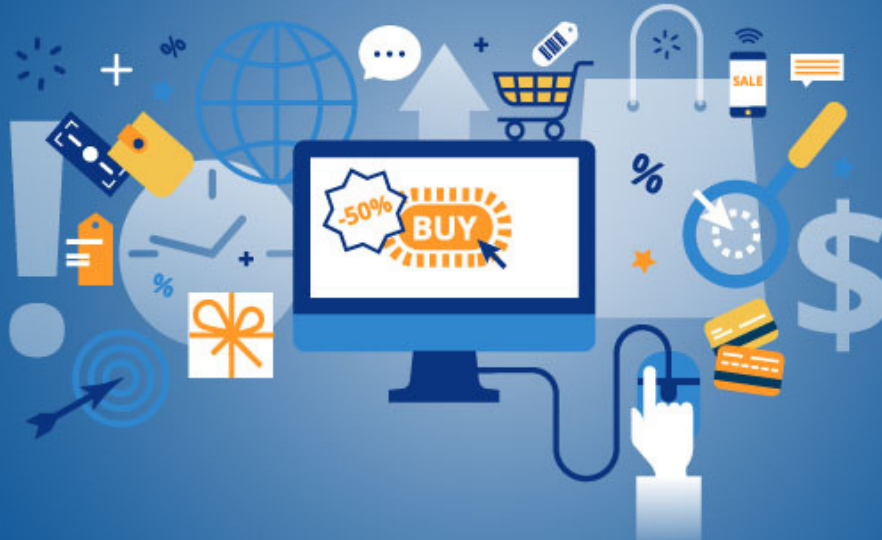


MAKING CONNECTIONS DELIVERING RESULTS



MTI
CONNECT

MTI Connect utilizes your existing data to offer key insights for finding and following your customers. Whether it be through traditional, snail-mail marketing, or more innovative, omni-channel solutions, MTI Connect delivers.



When it comes to customers, narrowing down the who, what, when, where, and why can be a process of trial and error. MTI Connect is here to help you learn exactly where your customers are and how to best reach them; taking the guesswork out of your marketing strategy.



Are you losing sales because online shoppers never come back to their **abandoned shopping carts**?

MTI Connect can help you close those sales by sending **automated, personalized** postcards to your customers within 48-72 hours to remind them of the items sitting in their cart. Snail-mail not for you? We have digital solutions, too!



There's a lot of guess-work that goes into when and how you should target your customers. MTI Connect can take the data that you already have and create **focused, timely marketing messages**.

Through email, social media, display and print, MTI Connect can **target your customers** in a way that's best for you.

MTI Connect consistently provides efficient and personalized solutions. With our blend of digital and traditional services, we can provide solutions for your specific needs. Trust MTI Connect to connect with your customers.

Ready get connected to your customers? Contact a member of our sales team today!



4 1 4 - 2 8 9 - 8 3 0 0 | m t i - c o n n e c t . c o m